



# INDUSTRIAL MINI CATALOG

ANTI-FATIGUE MATS • ENTRANCE MATS • LOGO MATS • SPECIALTY MATS

## Satisfaction Guaranteed

M+A mats are where design and function come together, where quality isn't compromised to meet a price point, and where solutions to your maintenance and décor problems come first. We promise our customers an unconditional, 100% satisfaction guarantee for the life of the product.

At M+A, we are committed to reducing our environmental impact. We are continually improving our environmental performance as an integral and fundamental part of our business strategy and operating methods. We have reduced waste going to landfills by 80% and recycle most paper, metal, cardboard, plastic, carpet, and rubber waste we generate. Our commitment is also evident in our development of dozens of mat styles that contain recycled raw materials.

For over five decades, M+A Matting has been America's leader in innovative floor protection systems, industrial safety, anti-fatigue products, and high performance entrance matting. If you are looking for better ways to minimize maintenance, prolong floor surface life, reduce cleaning costs, improve safety, or increase worker comfort, ask for M+A Matting.

For the full M+A Matting catalog, please scan the QR Code below.





# HOG HEAVEN®

Hog Heaven anti-fatigue mats are designed to provide comfort and durability in a variety of harsh conditions.

- **Comfortable** – High-density nitrile-blended cushion helps eliminate pressure to the lower back and legs, providing superior comfort
- **Safe** – Sloped edges provide a safe transition from floor to mat; certified high-traction by the National Floor Safety Institute (NFSI)
- **Durable** – Nitrile-blended cushion provides years of useful service life; cushion is molded, not glued, to the nitrile rubber surface so it will not separate; edges will not crack or curl
- **Versatile** – Welding safe; ESD rating of electrically conductive; chemical resistant; surface is grease/oil proof and cushion is grease/oil resistant
- Available in 5/8" or 7/8" thicknesses with solid black or with OSHA-approved caution yellow borders on two sides



Black & Yellow  
Striped Borders

Product No.  
421 (5/8" black border)  
422 (7/8" black border)  
423 (5/8" striped border)  
424 (7/8" striped border)

## HOG HEAVEN® IMPRESSIONS

Hog Heaven Impressions mats feature the same excellent anti-fatigue qualities as a Hog Heaven mat, but can be customized with your logo or message. Choose from 150 standard colors.



Black

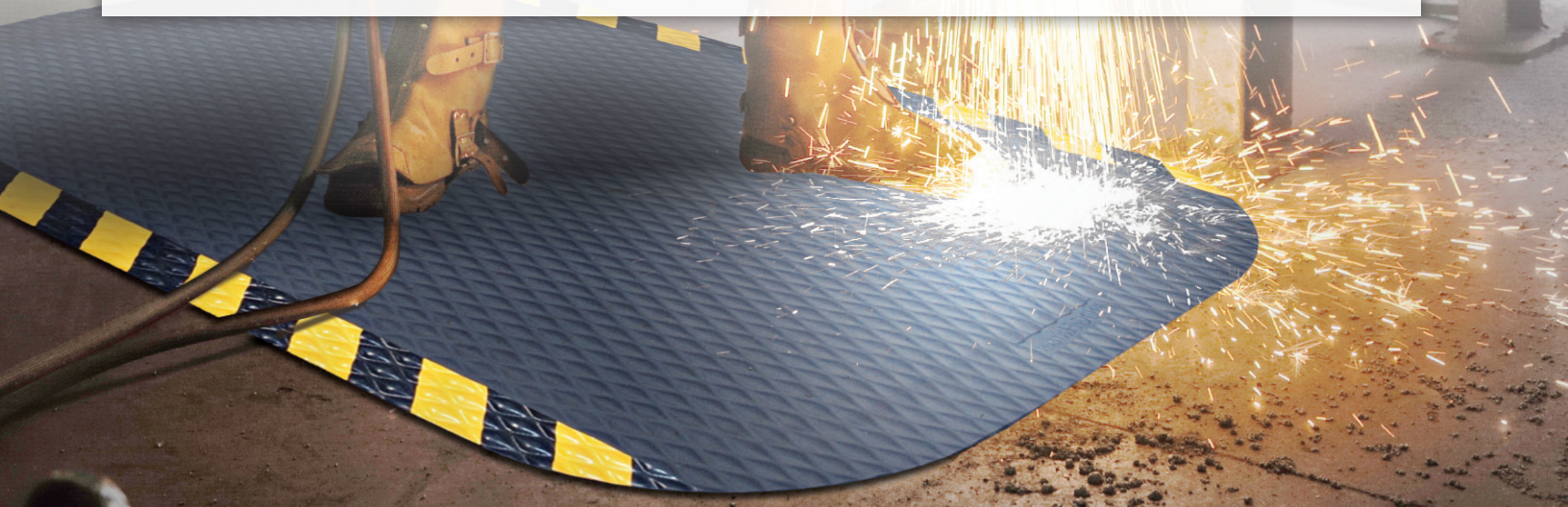
Product No. 3422

## HOG HEAVEN® MARBLE

Hog Heaven Marble mats feature the same excellent anti-fatigue qualities as a Hog Heaven mat, but with a smooth surface that allows workers to pivot freely.



Product No. 448 (5/8"), 449 (7/8")





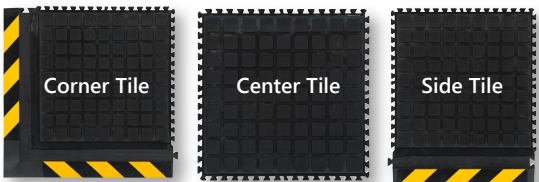
# HOG HEAVEN III® TILES & MATS

- **Comfortable** – High-density, closed-cell nitrile rubber cushion provides excellent anti-fatigue qualities to reduce the pain and fatigue associated with standing for long periods of time
- **Safe** – Certified high-traction by the National Floor Safety Institute (NFSI); beveled edges provide a safe transition from floor to mat and will not crack or curl
- **Durable** – Nitrile-blended cushion provides years of useful life and is molded, not glued, to the nitrile rubber surface; designed to withstand the rigors of almost any industrial environment
- **Versatile** – Welding safe; chemical resistant; ESD rating of electrically conductive; grease/oil proof
- Mats and tiles are 3/4" thick and available with black or OSHA-approved yellow striped border
- Linkable mats can be linked together to create long runs, tiles can be linked to create custom configurations, and workstation mats are ideal for standing areas

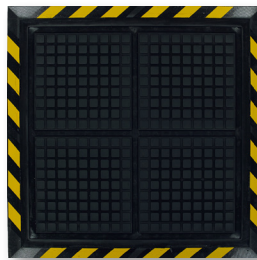
## HOG HEAVEN III® COMFORT TILES & MATS

Hog Heaven III Comfort mats and tiles offer outstanding anti-fatigue qualities and perform in various environments including those with oil, grease, and chemicals.

### Hog Heaven III® Comfort Modular Tiles



### Hog Heaven III® Comfort Workstation Mat



**Locking Mechanism**  
Linkable Mats and Modular Tiles feature a unique locking mechanism to ensure the mats remain tightly connected

### Hog Heaven III® Comfort Linkable Mats

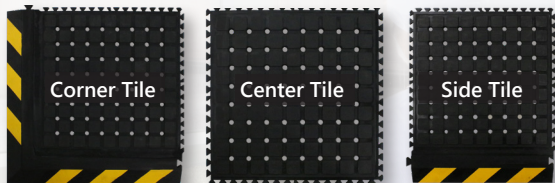


Product No.  
Modular Tile 4471 (18"), 4472 (36")  
Linkable Mats 4497 (black border), 4498 (yellow border)  
Workstation 4493 (black border), 4494 (yellow border)

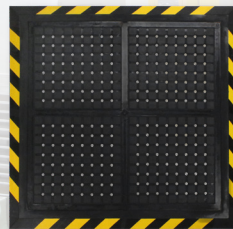
## HOG HEAVEN III® DRAINABLE TILES & MATS

Hog Heaven III Drainable Mats are flow-through mats with excellent anti-fatigue properties designed for wet areas where grease, oil, and chemicals may be present.

### Hog Heaven III® Drainable Modular Tiles



### Hog Heaven III® Drainable Workstation Mat



Product No.  
Modular Tile 4411 (18"), 4412 (36")  
Linkable Mats 4413 (black border), 4414 (yellow border)  
Workstation 4415 (black border), 4416 (yellow border)

### Hog Heaven III® Drainable Linkable Mats



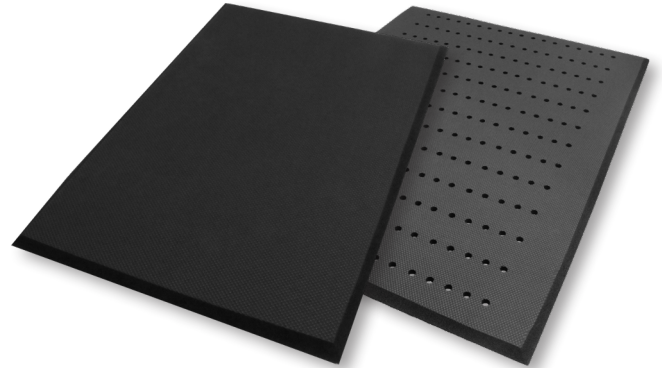


# DRY AREA MATS

## COMPLETE COMFORT™

Complete Comfort mats are ergonomically superior anti-fatigue mats designed for dry environments.

- **Comfortable** – 5/8" thick nitrile-blended foam provides superior anti-fatigue properties
- **Clean** – Anti-microbial treatment provides lifetime protection from odors and degradation
- **Easy to Clean** – Lightweight and flexible for easy handling and cleaning
- **Safe** – Beveled edges provide a safe transition from floor to mat; certified high-traction by the National Floor Safety Institute (NFSI)
- Grease and oil resistant; chemical resistant
- Also available with holes

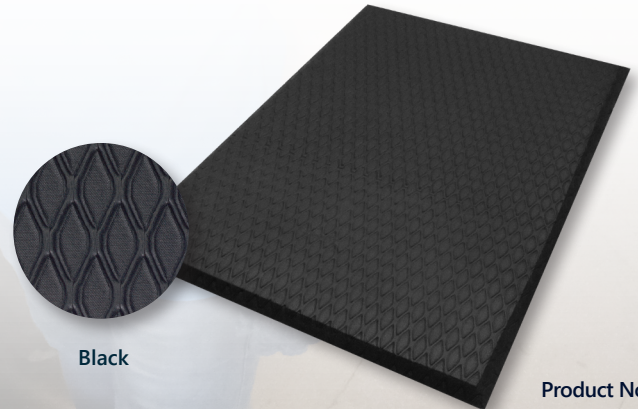


Product No. 494, 496 (with holes)

## CUSHION MAX™

Cushion Max anti-fatigue mats feature nitrile-blended foam designed to resist degradation from grease, oil, and chemicals. Though similar in price to PVC foam anti-fatigue mats, Cushion Max mats typically last twice as long.

- **Comfortable** – 5/8" nitrile-blended foam provides excellent anti-fatigue properties
- **Durable** – Diamond-pattern surface provides increased durability compared to ribbed surfaces which tend to peel and shave
- **Safe** – Beveled edges provide a safe transition from floor to mat; certified high-traction by the National Floor Safety Institute (NFSI)
- Grease and oil resistant; chemical resistant



Black

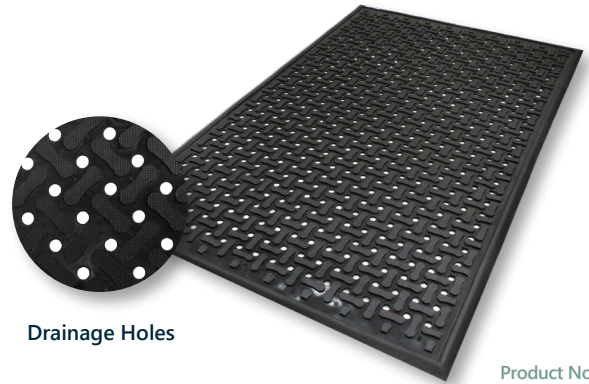
Product No. 414



## COMFORT FLOW™

Comfort Flow is a flow-through mat with excellent anti-fatigue properties designed for wet areas where grease, oil, and chemicals may be present.

- **Clean** – Anti-microbial treatment provides lifetime protection from odors and degradation; drainage holes allow liquid to flow through
- **Safe** – Beveled edges provide a safe transition from floor to mat; certified high-traction by the National Floor Safety Institute (NFSI)
- **Comfortable** – 3/8" nitrile rubber foam provides excellent anti-fatigue qualities
- **Versatile** – Grease and oil proof; chemical resistant; welding safe; ESD rating of static dissipative
- **Easy to Clean** – Lightweight flexible design ensures easy handling and cleaning



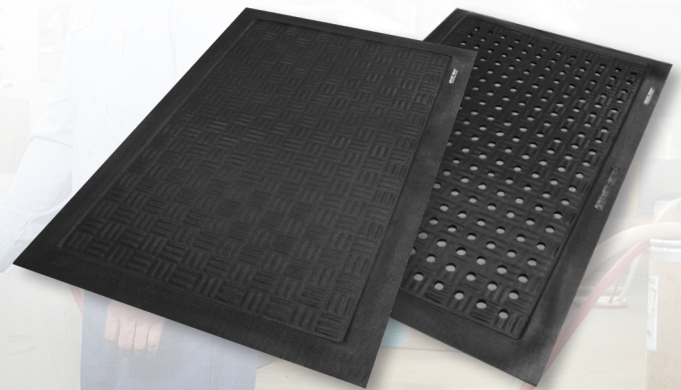
Drainage Holes

Product No. 420

## CUSHION STATION™

Cushion Station anti-fatigue mats feature nitrile foam designed to withstand grease, oil, and chemicals. They are anti-microbially treated to prevent odors and available with or without holes for use in wet or dry areas.

- **Comfortable** – 7/16" nitrile rubber foam provides excellent anti-fatigue properties
- **Clean** – Anti-microbial treatment provides lifetime protection from odors and degradation
- **Safe** – Beveled edges provide a safe transition from the floor to the mat; certified high-traction by the National Floor Safety Institute (NFSI)
- **Versatile** – Grease/oil proof; chemical resistant; welding safe; ESD rating of static dissipative
- **Easy to Clean** – Flexible construction makes this mat easy to clean; can be autoclave sterilized
- Available with drainage holes for wet area application



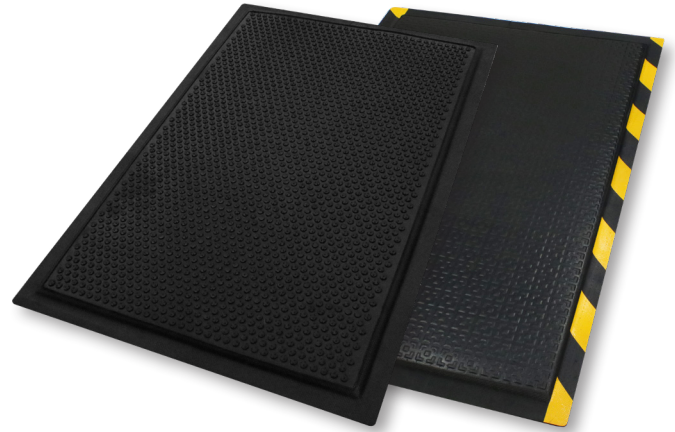
Product No. 370, 371 (with holes)



## DuraComfort

DuraComfort is a heavy-duty anti-fatigue mat that features a dense foam cushion encapsulated in nitrile rubber, making it suitable for both wet and dry environments.

- **Comfortable** – 1/2" dense foam cushion and nitrile rubber surface provide excellent anti-fatigue qualities
- **Safe** – Certified high-traction by the National Floor Safety Institute (NFSI)
- **Durable** – Nitrile rubber surface is penetration proof; borders will not crack or curl
- **Versatile** – Welding safe; grease/oil proof; chemical resistant; ESD rating of electrically conductive
- Available in two surface types: Textured Surface for dry/damp environments or Grip Surface for wet environments where additional traction is needed
- Available with solid black or with OSHA-approved yellow striped borders



Product No.  
465 (textured surface, black border)  
466 (textured surface, striped border)  
475 (grip surface, black border)  
476 (grip surface, striped border)



Grip Surface

Textured Surface

---

## KNEELING COMFORT™

Kneeling Comfort is an anti-fatigue kneeling mat designed to alleviate the pain associated with kneeling for long periods or kneeling on hard surfaces.

- **Comfortable** – 7/8" cushion reduces knee trauma and lower back stress
- **Clean** – Closed-cell nitrile-blended rubber foam will not absorb liquids, and the 100% nitrile rubber surface easily wipes clean with soap and water
- **Durable** – Welding safe; chemical resistant; surface is grease/oil proof, cushion is grease/oil resistant
- **Versatile** – When you need a welding safe, chemical resistant, grease/oil proof surface, put the rubber side up; when you need additional traction on a slippery surface, put the rubber side down (foam side up) for added slip-resistance
- **Convenient** – Built-in handle enables easy transportation and storage
- Rubber surface has an ESD rating of electrically conductive



Black

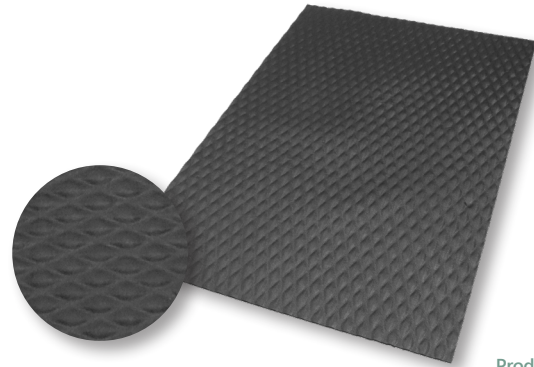
Product No. 433



## TRACTION TREAD

Traction Tread mats are designed to provide slip-resistant floor protection in a variety of settings.

- **Slip-Resistant & Safe** – Certified high-traction by the National Floor Safety Institute (NFSI)
- **Durable** – 1/8" solid nitrile rubber provides years of service life and will not crack or curl
- **Versatile** – Grease/oil proof; chemical resistant; welding safe
- ESD rating of electrically conductive



Black

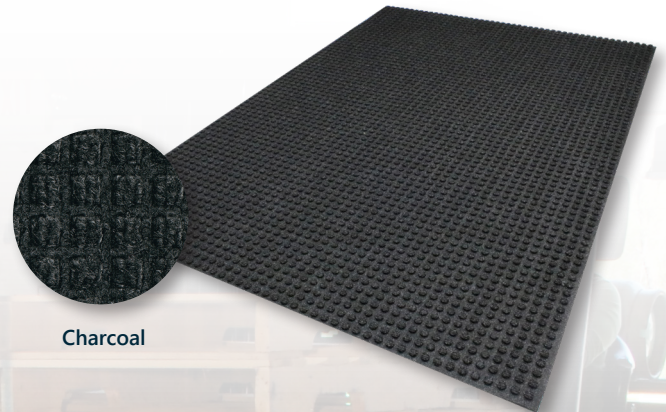
Product No. 50

---

## WATERHOG® FORKLIFT

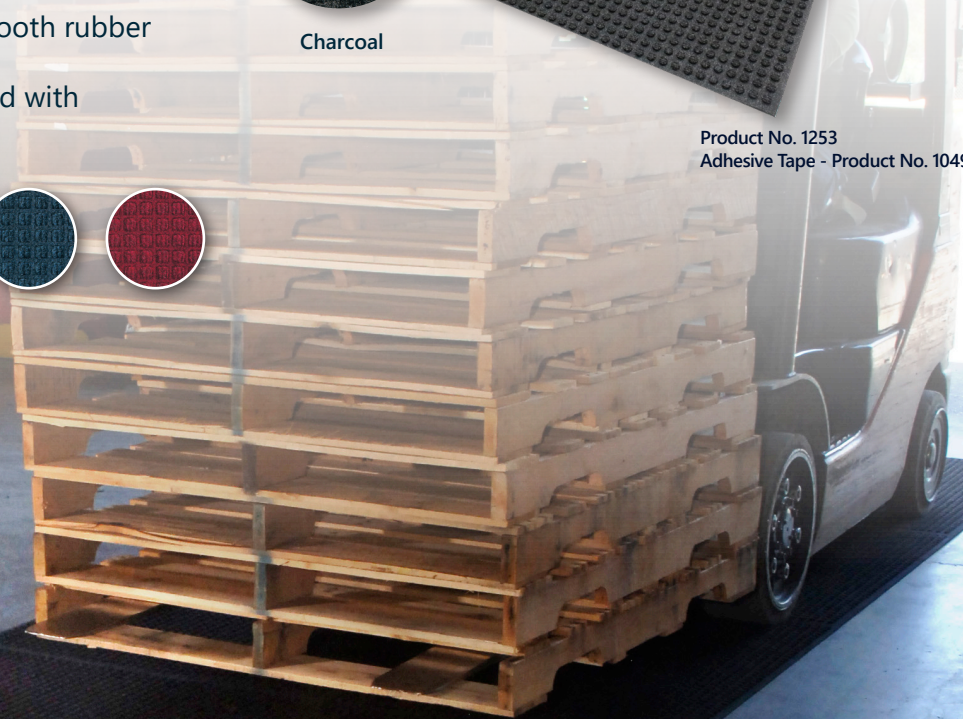
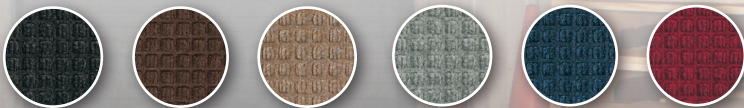
WaterHog Forklift mats effectively remove moisture and dirt from forklift wheels to minimize tracking and potential slip hazards. They are ideal for use in areas where forklifts enter and exit buildings.

- **Durable** – Reinforced rubber nubs, backing, and fabric top are designed to withstand forklift traffic up to 14,000 pounds
- **Clean and Dry** – Bi-level surface removes dirt and moisture from wheels and trap it to minimize tracking
- **Easy to Install** – Mats are easy to install and scalable for large applications; aggressive adhesive taping system (sold separately) keeps tiles from moving
- **Eco-Friendly** – Rubber backing contains 20% post-consumer recycled rubber from car tires; PET surface is made from at least 90% post-consumer recycled plastic bottles
- Available in 6 colors with 100-mil SBR smooth rubber backing
- WaterHog Forklift mats should be installed with double-sided tape (not included)



Charcoal

Product No. 1253  
Adhesive Tape - Product No. 1049





# CLEANSHIELD® RESTROOM MATS

CleanShield mats are premium disposable restroom mats designed to help prevent odors and protect floors and grout from uric acid damage.

- **Minimizes Odors** – Silver ion fibers provide antimicrobial protection from odors and degradation
- **Protects Floors** – Seep-Guard barrier eliminates urine seepage, protecting your floors from damage caused by uric acid
- **Stays in Place** – Tacki-Back adhesive keeps the mat flat and in place
- **Hassle Free & Dries Quickly** – Mats can be left in place during daily floor cleaning; floor scrubbers, mops, and brooms will pass over without causing damage; surface dissipates water quickly for fast drying time
- **Eco-Friendly & Attractive** – PET fabric surface is made from 76% post-industrial recycled content and features an attractive diamond pattern that provides an upscale look
- Designed for 30-day usage; easy-to-read TimeStrip® indicates when it's time to replace the mat (step on/push to initially activate)



Urinal Mat  
Product No. 4065, 4465



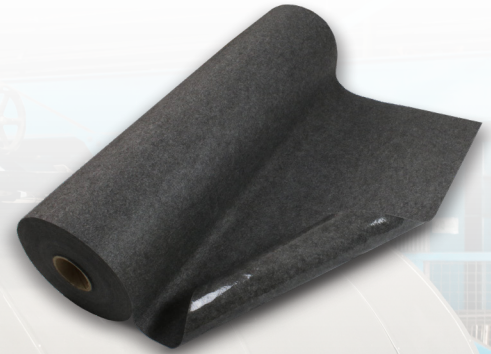
Universal Mat  
Product No. 4075

\*Sold by the case/box; 6 mats per case

# SURE STRIDE® MATTING

Sure Stride is low-profile, anti-microbial matting with adhesive backing to ensure it stays in place. It is recommended for commercial use on hard floor surfaces to help prevent slips, trips, and falls caused by moisture.

- **Keeps Floors Dry** – Moisture barrier keeps liquids from soaking through to the floor
- **Stays in Place** – Adhesive backing keeps mat flat and in place, even with heavy cart and buggy traffic
- **Hassle Free & Dries Quickly** – Mats can be left in place during daily floor cleaning; floor scrubbers, mops, and brooms will pass over without causing damage; surface dissipates water quickly for fast drying time
- **Safe** – Certified high-traction by the National Floor Safety Institute (NFSI)
- **Odor Resistant** – Anti-microbially treated for protection from odors
- **Easy to Install** – Cut individual mats from the roll as needed
- Will perform for up to 4 months under normal use



Product No. 4450

## ACCESSORIES

One cutting knife is included with each roll, additional knives may be purchased separately as well as cutting boards. Individual mats can be cut from the roll as needed.



Cutting Board  
(sold separately)  
Product No. 4459

Cutting Knife  
(included)  
Product No. 4460